

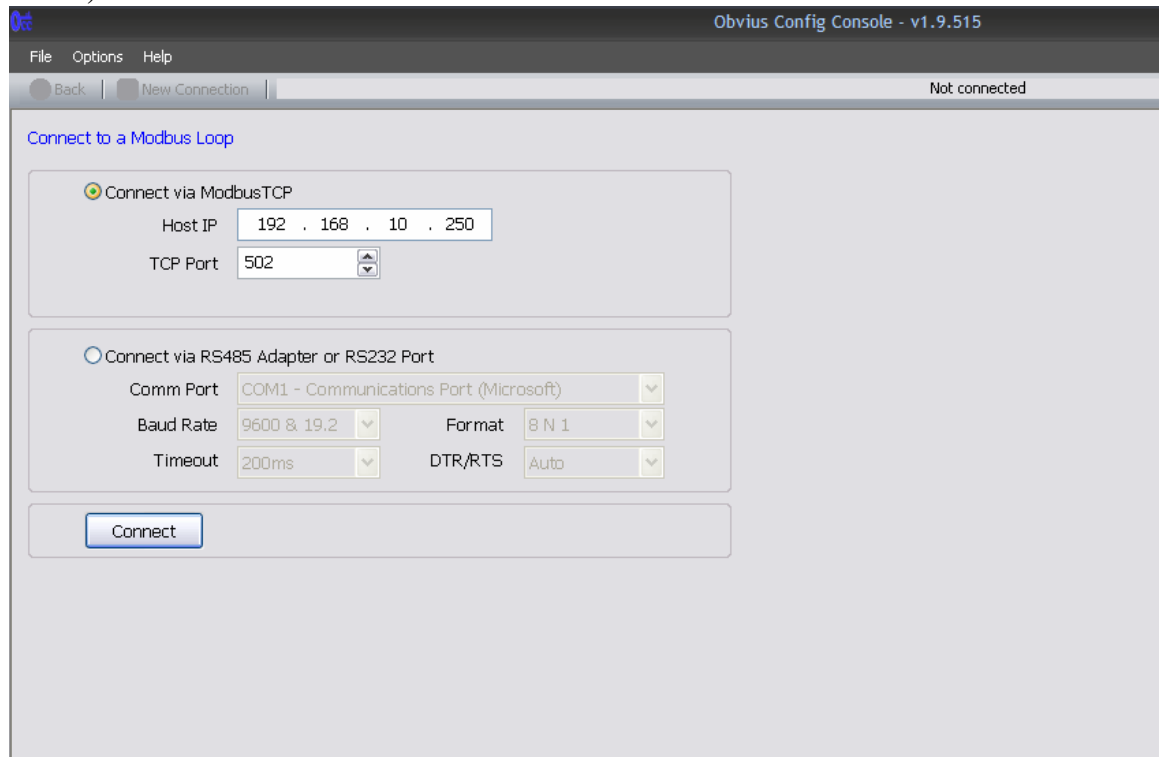
Obvius Configuration Console

The Obvius Configuration Console(OCC) is a windows application designed to configure and verify operation of Obvius Modbus devices. This setup utility can display the input readings and allow the user to reconfigure Modbus registers to help with the setup and troubleshooting in the field.

There are two methods for accessing devices using the OCC, both of which are discussed below.

Option 1 - Accessing the device using Modbus TCP with an Acquisuite:

- Ensure that the Acquisuite is connected to a LAN and has a properly assigned IP address (see A8812_Manual)
- Double click the OCC.exe file, to open the OCC application (see below)



- Notice there are two options to select from, select the one at the top and enter the Host IP address (Acquisuite IP address), click connect
- Skip ahead to Modbus Device List on the following page

Option 2 - Accessing the device with a third party master:

- To access the device list without an Acquisuite, the simplest method is directly connecting to the device that needs configuring via a RS232 or RS485 to USB converter. Both methods are discussed below:

- RS232 to USB Converter- (can be purchased from Obvius)
 - Connect the RS232 end of the cable into the 232 port on the device, and the USB end into a computer.
 - Once connected, open the OCC application and select the second check box “Connect via RS485 or RS232 Port”
 - Click on the Comm Port drop down menu, and look for the port labeled USB-to-serial comm port. Click the “Connect” button at the bottom of the screen, this will direct you to the Modbus Device List page
 - Note- when using a RS232 connection, only one device (the one directly connected) can be modified at one time. Thus only one device will appear on the device list. (To access a daisy chain of Modbus devices see the RS485 to USB connection below)

- RS485 to USB Converter- (can be purchased from Obvius)
 - Daisy chain the RS485 end of the cable into the existing RS485 port on the device, and connect the USB end into a computer.
 - Once connected, open the OCC application and select the second check box “Connect via RS485 or RS232 Port”
 - Click on the Comm Port drop down menu, and look for the port labeled USB-to-serial comm port. Click the “Connect” button at the bottom of the screen, this will direct you to the Modbus Device List page

Modbus Device List

- Once at the Modbus Device List page, click the “Scan” button and allow the application a few minutes to search for connected Modbus devices (see below)

Device	Status	Type
003	OK	Obvius, A8332-8F2D, IO Module, 8-Flex, 2-DO
028	OK	Obvius, ModHopper, R9120-3
096	OK	Obvius, A89DC-08, DC Current Sensor, 8 channel
193	OK	Obvius, ModHopper, R9120-3T
250	OK	Obvius, A8812, Internal I/O

- There are three main products that utilize the OCC, see below for the writable drives for each of the following products:

- Solar Current Monitor-
 - Writable Registers:
 - Modbus Address
 - Minimum alarm current threshold
 - Alarm deviation threshold
 - Minimum alarm deviation time
 - Channel disable

Obvius Config Console - v1.9.515

File Options Help

Back New Connection Connected to 192.168.10.250, Port 502 via Modbus/TCP

Modbus Device Details

Device Address: 096 Sent: 248 RTT: N/A
 Device Type: Obvius, A89DC-08, DC Current Sensor, 8 channel Received: 246
 Status: OK Errors: 1

	Setting:
Modbus address:	96
Alarm channel (65535=no alarm):	
Minimum alarm current threshold:	5.00 Amps
Alarm deviation threshold:	5.00 %
Minimum alarm deviation time:	10 seconds
Channel 1:	Enabled
Channel 2:	Enabled
Channel 3:	Enabled
Channel 4:	Enabled
Channel 5:	Enabled
Channel 6:	Enabled
Channel 7:	Enabled
Channel 8:	Enabled

- Modhopper-
 - Writable Registers:
 - Pulse count speed
 - RS485/232 mode
 - RS485 timeout
 - AES encryption key (Available only on R9120-5 series)
 - RF Speed (Available only on R9120-5 series)
 - RF Channel, and Configuration Access

Obvius Config Console - v1.9.515

File Options Help

Back New Connection Connected to 192.168.10.250, Port 502 via Modbus

Modbus Device Details

Device Address: 028 Sent: 660 RTT: N/A
 Device Type: Obvius, ModHopper, R9120-3 Received: 659
 Status: OK Errors: 1

	Setting:
Pulse #1 count	
Pulse #2 count	
Contact closure threshold:	(N/A)
Pulse count speed:	50 Hz
RS485/232 mode:	Modbus Auto
RS485 timeout:	500 mS
AES encryption key:	(N/A)
RF speed:	(N/A)
RF channel, softcfg:	(N/A)
Configuration access:	(N/A)

- Flex IO Module
 - Writable Registers:
 - Input Type
 - Contact closure threshold
 - Contact open-wire threshold
 - Pulses for instantaneous rate
 - Relay outputs.

Obvius Config Console - v1.9.515

File Options Help

Back New Connection Connected to 192.168.10.250, Port 502 via

Modbus Device Details

Device Address:	003	Sent:	232	RTT:	
Device Type:	Obvius, A8332-8F2D, IO Module, 8-Flex, 2-DO	Received:	227	RTT:	N/A
Status:	OK	Errors:	1		

Input Type:	
Input channel 1:	Current, 4-20mA
Input channel 2:	Current, 4-20mA
Input channel 3:	Current, 4-20mA
Input channel 4:	Current, 4-20mA
Input channel 5:	Current, 4-20mA
Input channel 6:	Unconfigured
Input channel 7:	Unconfigured
Input channel 8:	Unconfigured
Contact closure threshold:	1000 ohms
Contact open-wire threshold:	65535 ohms
Pulses for instantaneous rate:	5
Relay Mode:	
Relay output 1:	Manual
Relay output 2:	Manual