



Engineering Specification Sheet
PROMINENCE SERIES 12 string CONTACTOR combiner box

GENERAL INFORMATION

- **Description:** 12 string fused combiner box with 200A at 600VDC maximum output DC contactor.

- **Dimensions:**

	Part number
○ NEMA 4X Fiberglass (Standard):	18.00" x 16.00" x 8.00" PR-12C-FG
○ NEMA 4 Metallic (Optional):	18.00" x 16.00" x 8.00" PR-12C-S
○ NEMA 4X 316 Stainless (Optional)	18.00" x 16.00" x 8.00" PR-12C-SS

- **Fuse holders:** 12 finger safe, non-load break fuse holders. 30A, 1000VDC rated.

TECHNICAL SPECIFICATIONS

- **Input Wires:** Fuses: 12 total, 8-14AWG, 75°C, Cu Wire

- **Output Wires:** Fused, Non Fused: 1 ea., 350MCM-6AWG, 90°C, Cu/Al Wire

- **Ground Terminals:** 1 ea., 350MCM-6AWG, 90°C, Cu/Al Wire
13 total, 4-14AWG, 90°C, Cu/Al Wire

- **Operating Temperature, Humidity:** -10°C to +60°C (15°F to 130°F), 0-100% Humidity

- **Busbars:** C11000 Alloy (Copper), electroplated to prevent corrosion. Rated continuous duty.

FEATURES

- **Safety shields:** Lexan shields over all live parts for a completely deadfront unit.
- **Labeling:** All components, wire ranges, torque values silkscreened onto backpan.
- **Mounting panel:** White powder coat with integrated wire management, hydraulically inserted threaded nuts for maximum gripping strength.
- **Insulators:** All busbars are supported by 1000VDC rated insulators for added rigidity.
- **Contactors Coil:** 24VDC w/ 0.5A circuit breaker protection.
- **Monitor:** NO/NC output terminals.

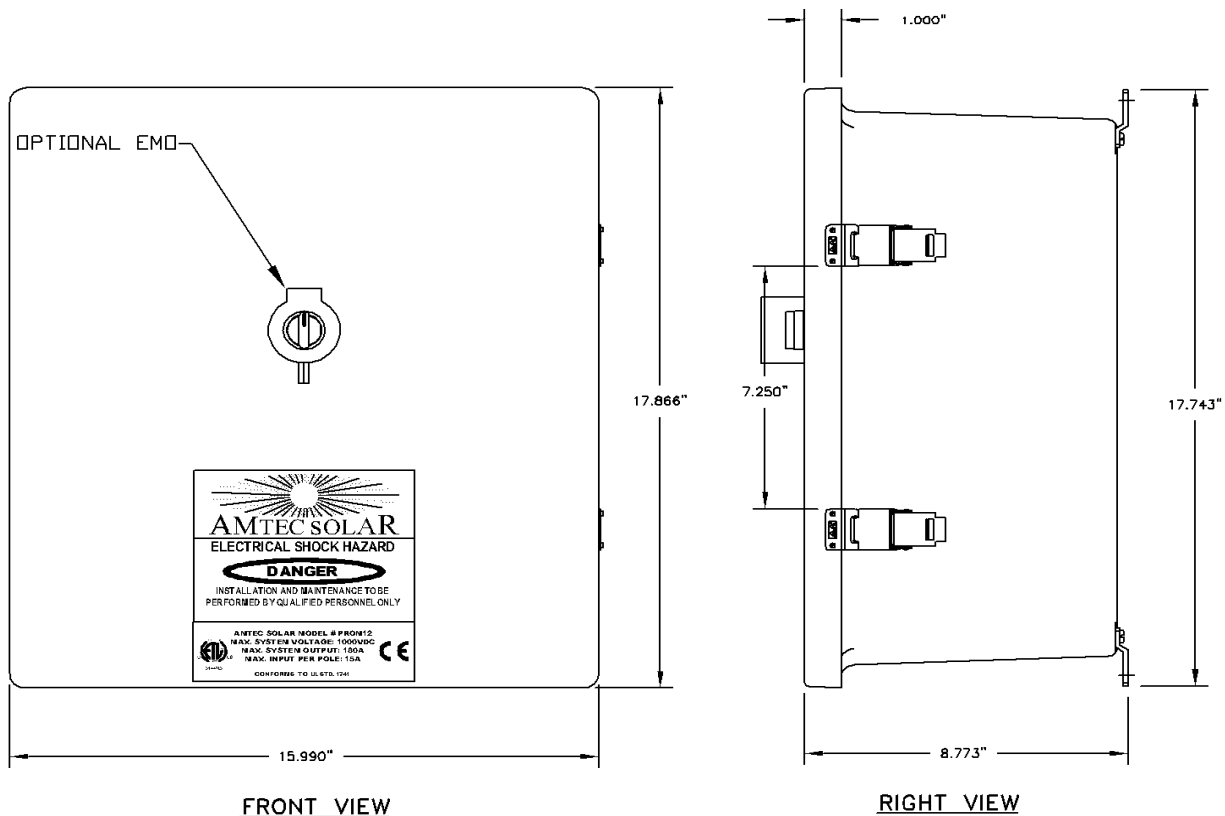
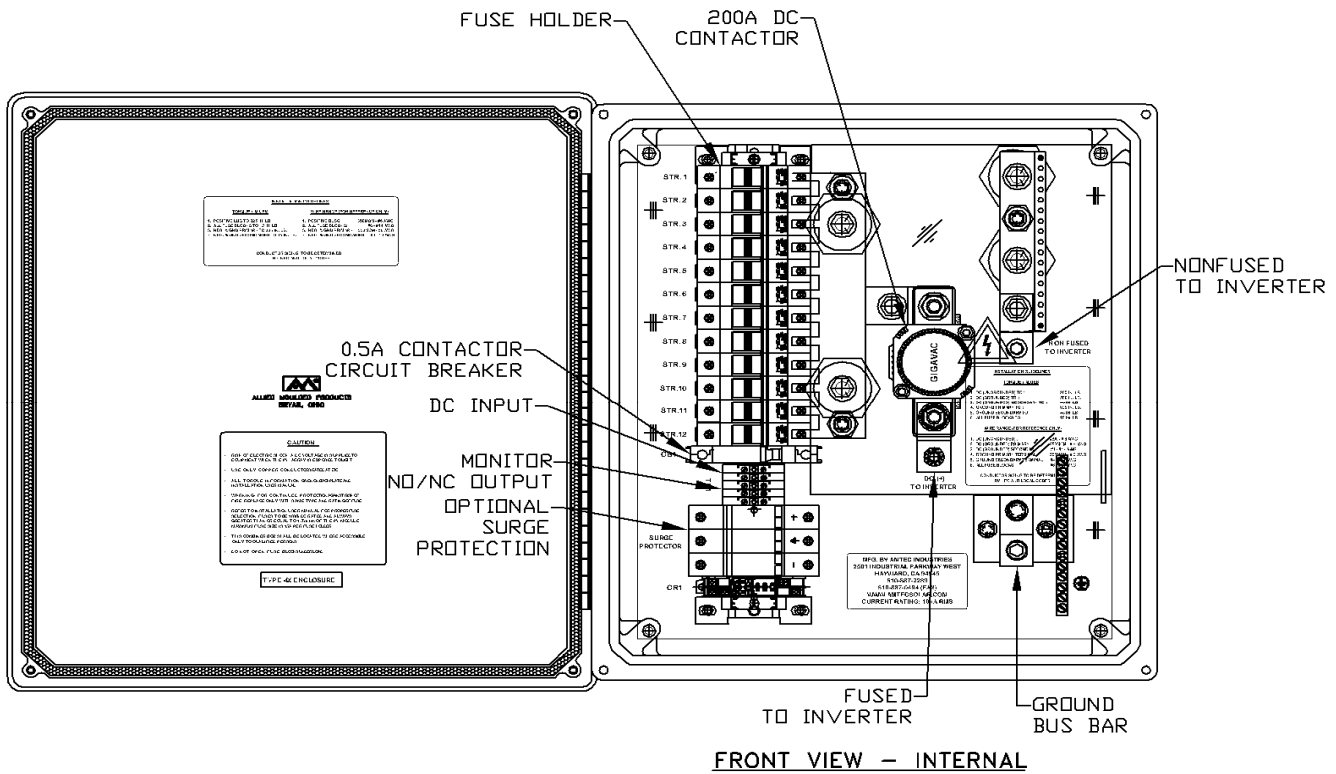
OPTIONS

- **Surge Protection:** Surge protection can be added for an additional cost. Just add "SP" at the end of part number.
- **Emergency Off Cabinet:** NEMA 4X Keyed EMO push button. Available with or without status indicating LEDs.

APPROVALS

- Listed to UL1741, CAN/CSA C22.2 Listed, CE Listed @ 600Volts.





-Layouts shown are for standard NEMA 4X fiberglass enclosure-