



Engineering Specification Sheet
EQUINOX 750

GENERAL INFORMATION

- **Description:** Recombiner box with up to eight inputs and 750A of total output.
- **Dimensions:**
 - NEMA 4 Metallic (Standard): 36" x 36" x 10"
 - NEMA 4X Stainless Steel (Optional): 36" x 36" x 10"
 - NEMA 4X Fiberglass (Optional): 36" x 36" x 10"
- **Fuseholders:** Up to eight, depending on total current output.
- **Fuses:** Must be specified at time of order, 35A-200A, total rating of fuses must not exceed 750A. Class RK5, 600VDC.

TECHNICAL SPECIFICATIONS

- **Input Wires:**

35A-60A Fuse Holders:	2-14AWG, 75°C, Cu/Al Wire
70A-100A Fuse Holders:	2/0-6AWG, 75°C, Cu/Al Wire
110A- 200A Fuse Holders:	350MCM-6AWG, 75°C, Cu/Al Wire
Non fused dist. block:	2/0-14AWG, 75°C, Cu/Al Wire
Grounds:	13 total, 4-14AWG, 90°C, Cu/Al Wire
- **Output Wires:**

Fused, non fused	2 ea., 500MCM-2AWG, 90°C, Cu/Al Wire
Ground:	2 ea., 350MCM-6AWG, 90°C, Cu/Al Wire
- **Operating Temperature, Humidity:** -10°C to +60°C (15°F to 130°F), 0-100% Humidity

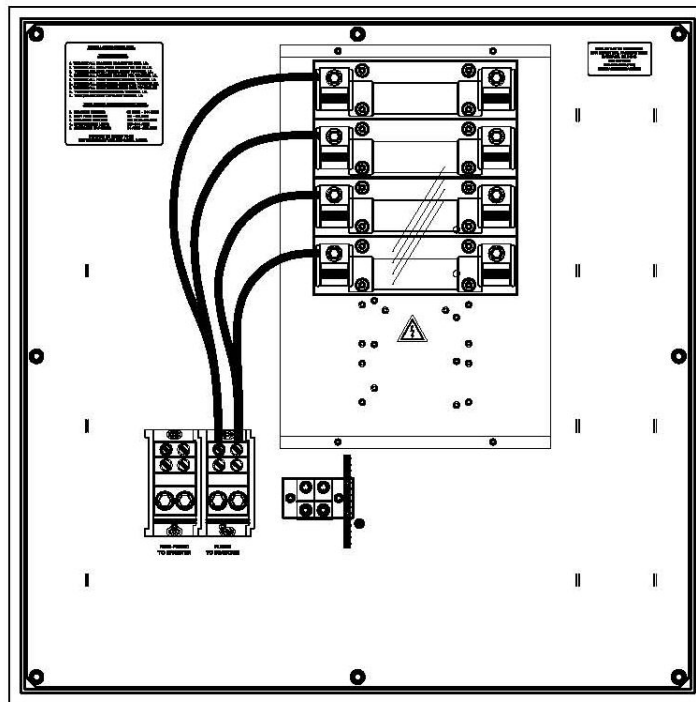
FEATURES

- **Labeling:** All components, wire ranges, torque values silkscreened onto backpan.
- **Mounting panel:** White powder coat with hydraulically inserted threaded nuts for maximum gripping strength.
- **Plastic Shields:** Protect users from all live parts, provide completely deadfront unit.
- **Monitoring:** Integrated monitoring available, with RS485 ModBus output.
- **Padlockable Handle:** To prevent unauthorized access.

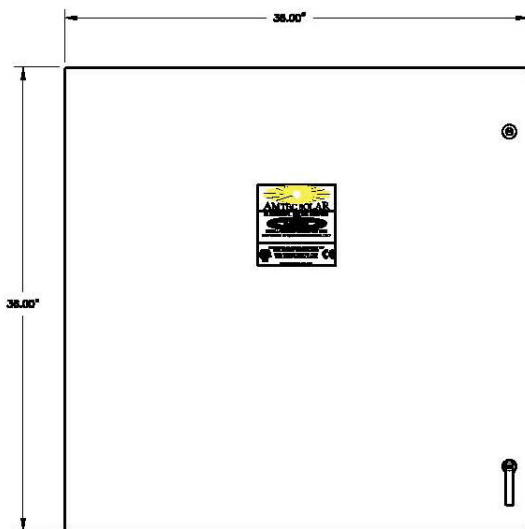
APPROVALS

- Listed to UL1741, CAN/CSA C22.2 Listed, CE Listed

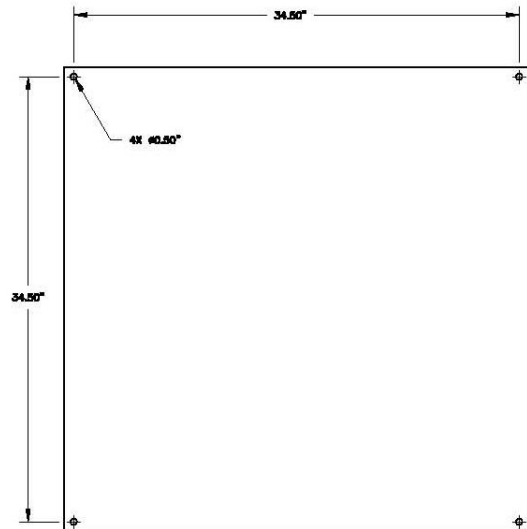




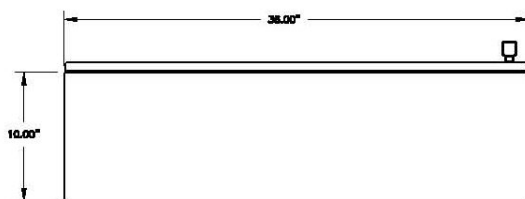
-Drawing above shows 200A fuse holders



Front View



Rear View - Mounting Locations



Bottom View

-Layouts shown are for standard NEMA 4 metallic enclosure-

AMtec Solar
2501 Industrial Parkway West, Hayward CA 94545

www.amtecsolar.com

510.887.2289